

**LACLEDE COUNTY, MISSOURI  
LOCAL EMERGENCY PLANNING COMMITTEE**

**HAZARDOUS MATERIALS TRANSPORTATION FLOW STUDY**

The Laclede County LEPC is accepting bids for a Hazardous Materials Transportation Flow Study, hereinafter known as the "Flow Study". This bid will be a lump sum price with fixed costs. Bids shall include labor, travel, lodging, meals, and materials as required.

Bids will be accepted until January 20, 2019, at 12:00 pm central standard time. Bids shall be directed to Laclede County LEPC, 186 North Adams, Lebanon, MO 65536 or via email to [lepcchair@lacledecountrymissouri.org](mailto:lepcchair@lacledecountrymissouri.org)

Each bidder submitting a bid represents they have read and clearly understand the Scope of Work for this project. Further information is provided on the Laclede County Clerk Website.

The Laclede County, LEPC reserves the right to accept any proposal and/or bids, to reject any and/or all proposals and/or bids in full or in part, and to waive irregularities and/or formalities as deemed appropriate.

The Flow Study and related data shall be submitted by Aug. 1, 2019. No extensions will be granted. Cost payable in full upon completion and official acceptance of study and data, by the Laclede County Local Emergency Planning Committee and Missouri Emergency Response Commission.

The Supplier will report directly to the Chairman of the Laclede County LEPC.

Within ten days of completing the project the supplier will provide the Laclede County LEPC the data collected in the requested format.

The Supplier must provide the Laclede County LEPC with the insurance requirements listed. A copy of the Certificate of Insurance or signed letter from the organization head certifying the existence of the necessary insurance coverage:

COVERAGE	MINIMUM AMOUNTS & LIMITS
Workmen's compensation (including Employers liability)	Statutory \$500,000 Per accident \$500,000 Per person per disease \$500,000 Disease aggregate
Commercial General Liability	\$1,000,000 Per occurrence \$2,000,000 General Aggregate \$2,000,000 Products/Completed Operations Aggregate
Business Auto Liability (including owned, non-owned, and hired vehicles)	\$1,000,000 Per occurrence

**SCOPE OF WORK**

Perform Hazmat Commodity Flow Study per guidelines outlined in the documents in this hyperlink.  
<http://www.trb.org/Main/Public/Blurbs/8be31746-4853-4b77-a5b1-e1bf3547453e.aspx>

# Missouri Emergency Response Commission

## Flow Studies

Flow studies are intended to provide counties with information about hazardous chemicals that transit through their county along road and railways. This information is then used to assist in prevention of, and response to, a hazmat emergency.

LEPCs can request a flow study grant from the MERC

- Grant must be requested no later than May 15 of each year
- Recipients must complete the flow study before August 31<sup>st</sup> of each year
- Invoices must be submitted before September 15<sup>th</sup> of each year

LEPCs can use county Chemical Emergency Preparedness Funds (CEPF) to pay for their flow study

- Flow study should be identified on the county CEPF application plan
- Receipts should be maintained and turned in with the following year's CEPF application

Flow studies can be county or regionally based

### Flow Study Process

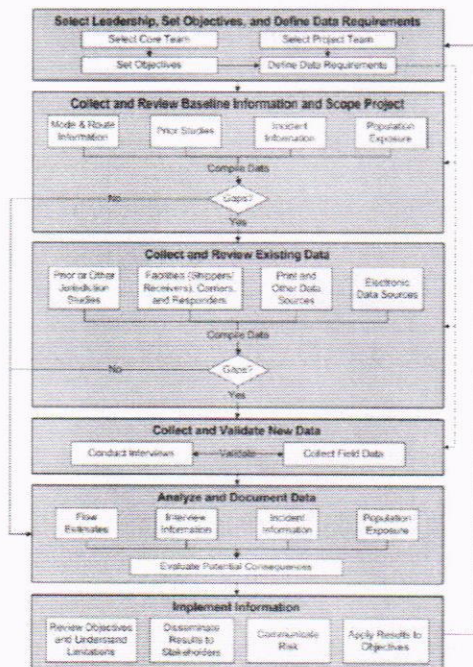


Figure S-1. The Hazardous Materials Commodity Flow Study (HMCF) process.

Flow Study Guide: <http://www.trb.org/Main/Public/Blurbs/8be31746-4853-4b77-a5b1-e1bf3547453e.aspx>